



CASE STUDY 20

Cromwell Place, South Kensington

After a five year renovation project, Cromwell Place now offers a stunning, first-of-its-kind shared exhibition and working space for art professionals, in the heart of South Kensington's Museum District.

These new, connected spaces in a series of five grade II listed townhouses and mews, provide rentable exhibition space, thirteen period gallery spaces and viewing rooms, private work spaces, office space, art storage and a club room for members and their visitors. Originally designed in 1858 by patron of the arts, self-trained property developer and public benefactor, Sir Charles James Freake, the road of Cromwell Place became home to artists including John Everett Millais, Francis Bacon and the former studio of celebrated Victorian portraitist Sir John Lavery located at No.5 Cromwell Place. The existing building contained many outstanding period features, including original staircases with ironwork balustrades and curled timber handrails; original fireplaces, cornicing, ceiling roses and late Baroque-style mirrors, all of which have been retained in this sympathetic refurbishment project.

The Professional Team

Architect:



Buckley Gray Yeoman

Client:



South Kensington Estates

Main Contractor:



Gilbert-Ash

Installation:



Project Scope

Nova Lifts was approached by Gilbert–Ash to develop the design of the lifts with architects BYG on this exceptional project, through recommendations from a previous project at the Royal College of Pathology.

Three bespoke lifts were designed and supplied to meet the technical aspects of the project and the stylish aesthetic finishes demanded by architects Buckley Gray Yeoman. The open and adjacent entrance 630kg load, 8 person passenger lift was a 4-stop lift running from ground level to the third floor to service all gallery levels. The 1800kg load installation was an 8-

stop lift for the transportation of passengers and goods throughout the full height of the building from basement to the fourth floor. The third lift was a scissor platform lift to give access between the ground and lower ground floors for people with impaired mobility.

Lift Specification

Working within this series of Grade II listed buildings brought some challenges to the design space available.

The construction for this project was complex because the lift shaft for the passenger lift was positioned in the gap between the exterior walls of two of the buildings, meaning the lift shaft had to be built within this space, with steel beams added at the back of the shaft for the lift to be fixed to.

Additionally, both passenger lifts in the building needed to be machine room less (MRL) traction lifts due to space restrictions. Both passenger lifts had two entrances, one lift with an opposite entrance, and one with an adjacent entrance.



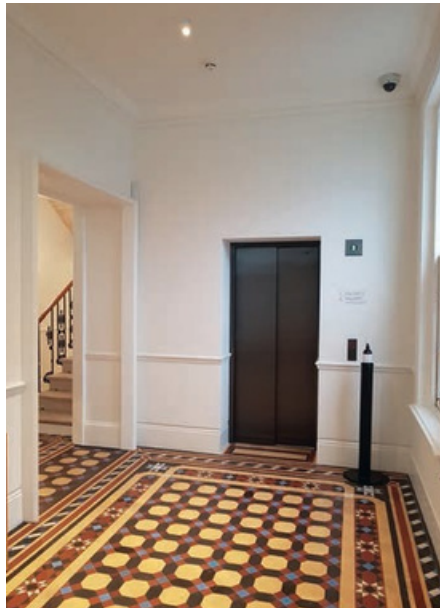
Aesthetics

All of the lifts installations were specified to complement the contemporary décor design concept of the building. The passenger lift internal cabins were finished with stainless steel interiors, a full mirror on one side, suspended ceilings in nuanced glass, push button control panels with stainless steel cylindrical curved handrails in a satin finish. Externally, the lift doors, frames, face plates and push buttons were finished in Steel Color Grigio Satinato stainless steel, to complement the interior design colour scheme of the building.

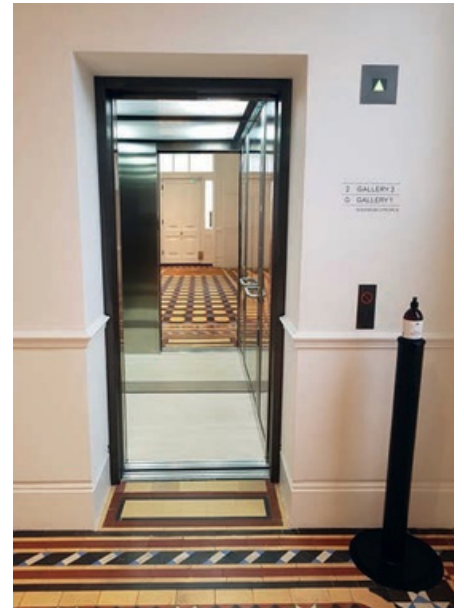
The platform lift was a half-height lift with glass walls, finalised with flooring to match the finish specified on the ground and lower ground reception areas.



Cromwell Place first-of-its-kind art space, located in South Kensington



Passenger lift with landing doors and frames in Steel Color Grigio Satinato stainless steel



Passenger lift with internal cabin finished in stainless steel with a full mirror



The passenger and goods lift complementing the build interior design scheme



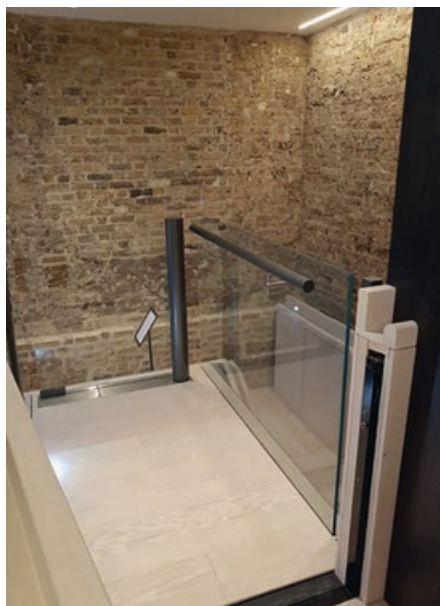
Passenger and goods lift for transportation of people and items to all floors



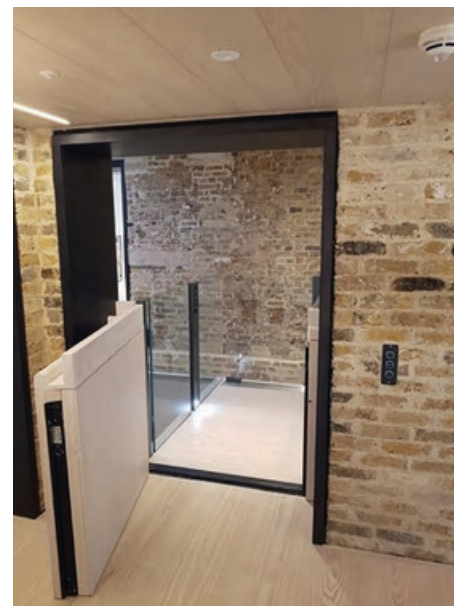
Stainless steel internal finishes with flooring to match the contemporary building design



With the gallery flowing between different buildings, the entrances did not always match up



Scissor lifts allow easy movement between small floor level changes within the building



A stylish, modern scissor lift installed in the reception area for visitors with impaired mobility



Cromwell Place offers 16 exhibition rooms and four viewing rooms in this unique working and gallery space for artists

Conclusion

Following this outstanding restoration and refit project, Cromwell Place now offers a unique working and exhibition space for artists. It has been a delight for Landmark Lifts to be involved in this development. The wide range of passenger lift, scissor lift and platform lift options offered by Nova Lifts, ensured the bespoke solutions required for this unique project met all regulations for legal compliance, combined with stunning aesthetics to complement and enhance the internal design of the building.



Cromwell Place Club Room



The restoration included maintaining the building's period features



Entrance to the new pavilion providing a contrasting, contemporary viewing space

Contact

Please contact Nick Taylor at Nova Lifts for more information about our full range of lifts, designed with a wide range of bespoke options to meet any future project requirements.



+44 (0)845 8888 767 mail@novalift.co.uk

www.novalifts.co.uk

Nova Lifts is a trading name of N L C Nova Lift Co. Limited